

Influencing SAP: Customer Connection

Delivery Call - BusinessObjects Web Intelligence 2015

Daniel-Alexander Heller – Project Manager
Frank Prabel – Senior Director of Product Management
July 28, 2015



Legal disclaimer

The information in this presentation is confidential and proprietary to SAP and may not be disclosed without the permission of SAP. This presentation is not subject to your license agreement or any other service or subscription agreement with SAP. SAP has no obligation to pursue any course of business outlined in this document or any related presentation, or to develop or release any functionality mentioned therein. This document, or any related presentation and SAP's strategy and possible future developments, products and or platforms directions and functionality are all subject to change and may be changed by SAP at any time for any reason without notice. The information in this document is not a commitment, promise or legal obligation to deliver any material, code or functionality. This document is provided without a warranty of any kind, either express or implied, including but not limited to, the implied warranties of merchantability, fitness for a particular purpose, or non-infringement. This document is for informational purposes and may not be incorporated into a contract. SAP assumes no responsibility for errors or omissions in this document, except if such damages were caused by SAP's willful misconduct or gross negligence.

All forward-looking statements are subject to various risks and uncertainties that could cause actual results to differ materially from expectations. Readers are cautioned not to place undue reliance on these forward-looking statements, which speak only as of their dates, and they should not be relied upon in making purchasing decisions.

Agenda

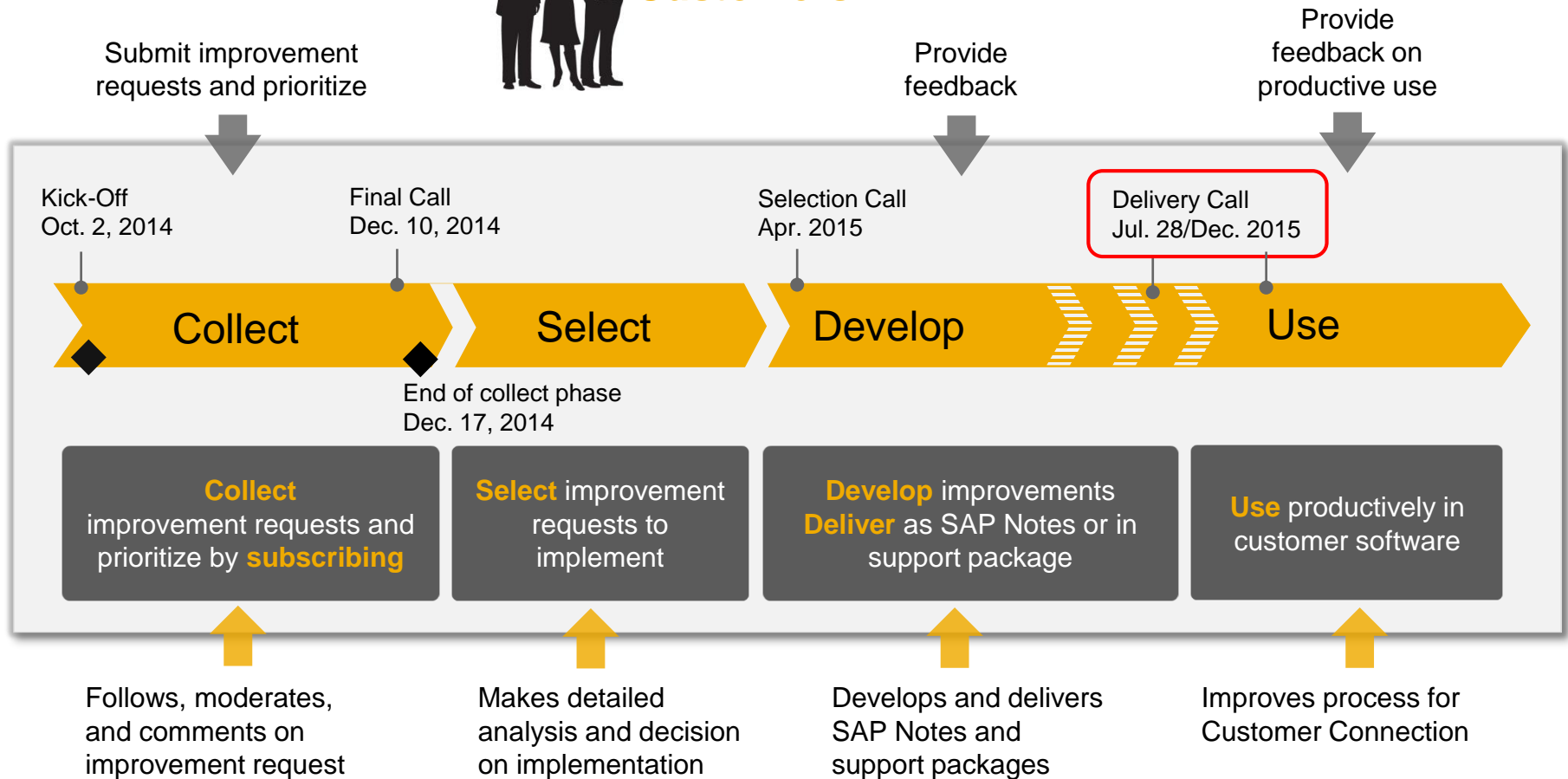
- Recap of project timeline and approach
- Overview of delivered improvements
- Overview of improvements in development
- Next Steps

Customer Connection BusinessObjects Web 2015

Project timeline



Customers



SAP Project Team

Improvement Requests delivered

BI 4.1 SP06

- D7422
Add back ability to select range of cells/columns via shift-click
- D7145
Global Input controls for whole document
- D7402
The objects on Query filter have to show the information when the cursor over
- D8019
Record Last used prompt values (for each user) – Use BI variants
- D7544
Dashed line type in WebI chart
- D7144
Allow selection of "EMPTY" values when applying filter
- D7151
Enhance the "Relative Date" function

Requests has been developed and are available in BI 4.1 SP06



D7422 – Select Range of Columns/Rows with Shift Click

Select multiple table rows or columns

- Shift Click to select a range
- CTRL Click to select specific columns or rows

The screenshot displays the SAP Business Objects interface. On the left, the 'Available Objects' pane shows a tree structure with 'Variables' selected. The main area shows a report titled 'Report 1' with a table of data. A large red arrow points from the text 'Shift + Click Report 1' to the first row of the table, indicating the selection action.

State	City	Store name	Lines	Category	Quantity sold	Sales revenue
California	Los Angeles	e-Fashion Lo	Accessories	Belts,bags,w	1,040	\$159,130
California	Los Angeles	e-Fashion Lo	Accessories	Hair accesso	172	\$30,261
California	Los Angeles	e-Fashion Lo	Accessories	Hats,gloves,s	1,481	\$202,058
California	Los Angeles	e-Fashion Lo	Accessories	Jewelry	3,637	\$578,296
California	Los Angeles	e-Fashion Lo	Accessories	Lounge wear	429	\$61,397
California	Los Angeles	e-Fashion Lo	Accessories	Samples	493	\$65,022
California	Los Angeles	e-Fashion Lo	City Skirts	Full length	145	\$27,059
California	Los Angeles	e-Fashion Lo	City Skirts	Mini city	82	\$14,587
California	Los Angeles	e-Fashion Lo	City Trousers	Bermudas	59	\$9,862
California	Los Angeles	e-Fashion Lo	City Trousers	Long lounge	109	\$17,511
California	Los Angeles	e-Fashion Lo	Dresses	Casual dress	767	\$38,555

D7145 – Global input controls for whole document

What are input controls

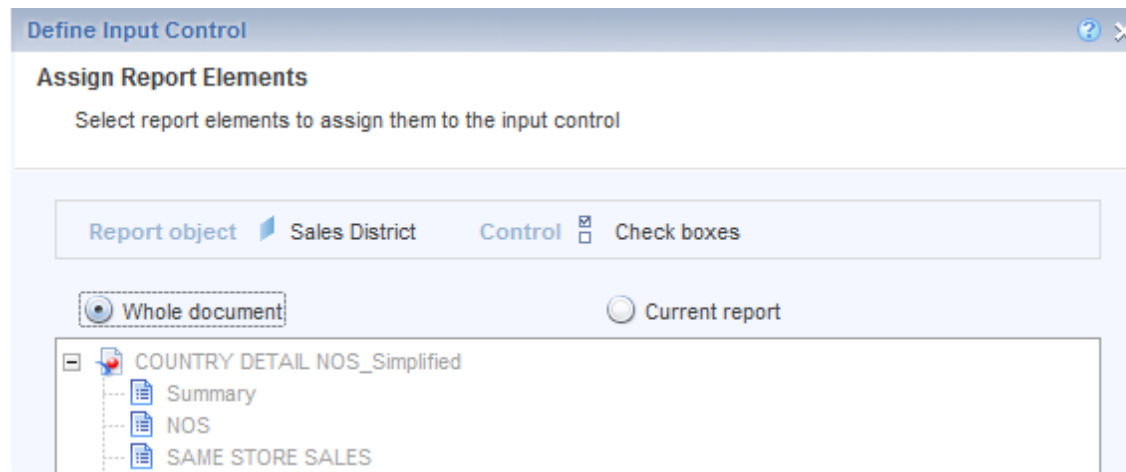
- Input controls are a way to filter report data
- Several user experience options are available (drop down, check box etc.)

Before BI 4.1 SP06

- Up to BI 4.1 SP05, input controls only apply to one report

With BI 4.1 SP06

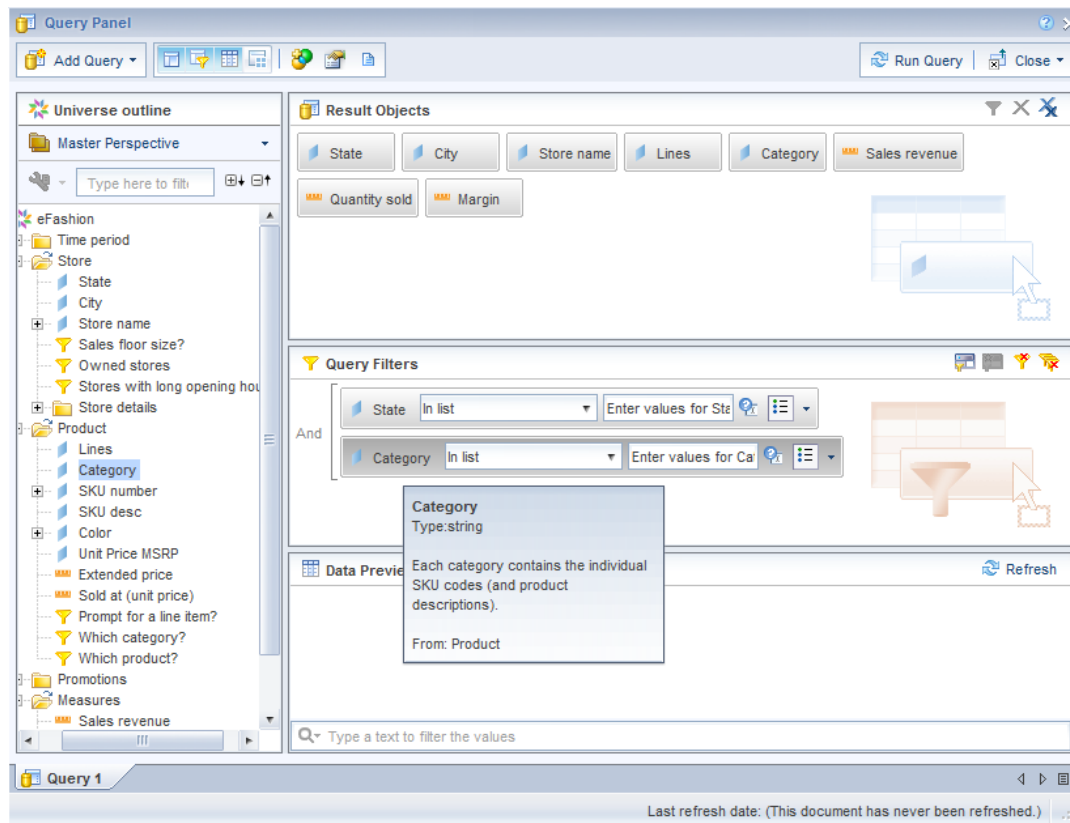
- Input controls can apply to one or to all the reports in a Web Intelligence document



D7402 – The objects on Query filter have to show the information when Cursor over

BI4.1 SP06 Web Intelligence query panel

- Tooltips are shown for both result objects (no change) and filter objects (new in 4.1 SP06)



D8019 – Record last used prompt values – BI variants

What is a BI variant

- A BI variant is a set of questions (prompts) and corresponding answers
- BW variants are used extensively in BW systems

Workflows

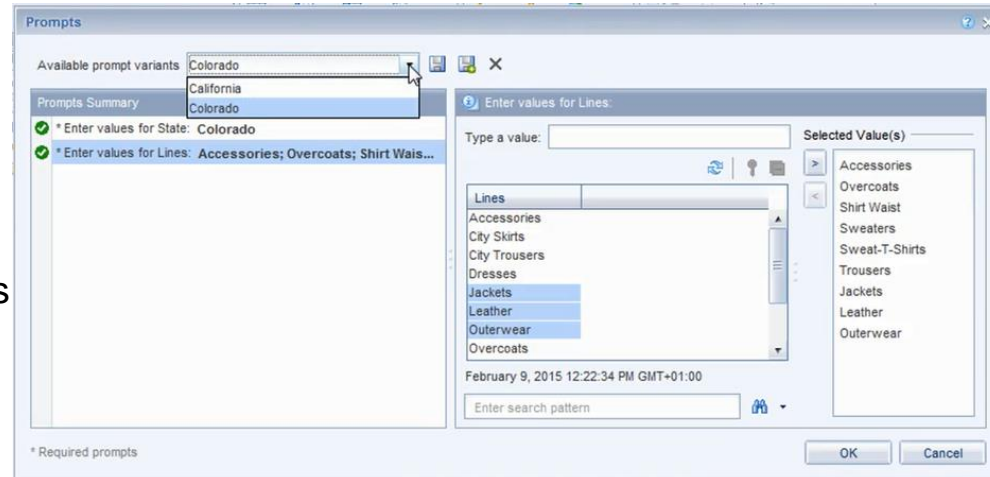
- Create a variant (or multiple variants) in WebI.
- Select a variant when refreshing that WebI report
- Edit, delete a variant
- Note: BI variants are stored in the CMS

Benefits

- Save time (single click)
- Available for any data source (BW included)
- Should help reduce proliferation of WebI reports

Initial limitations

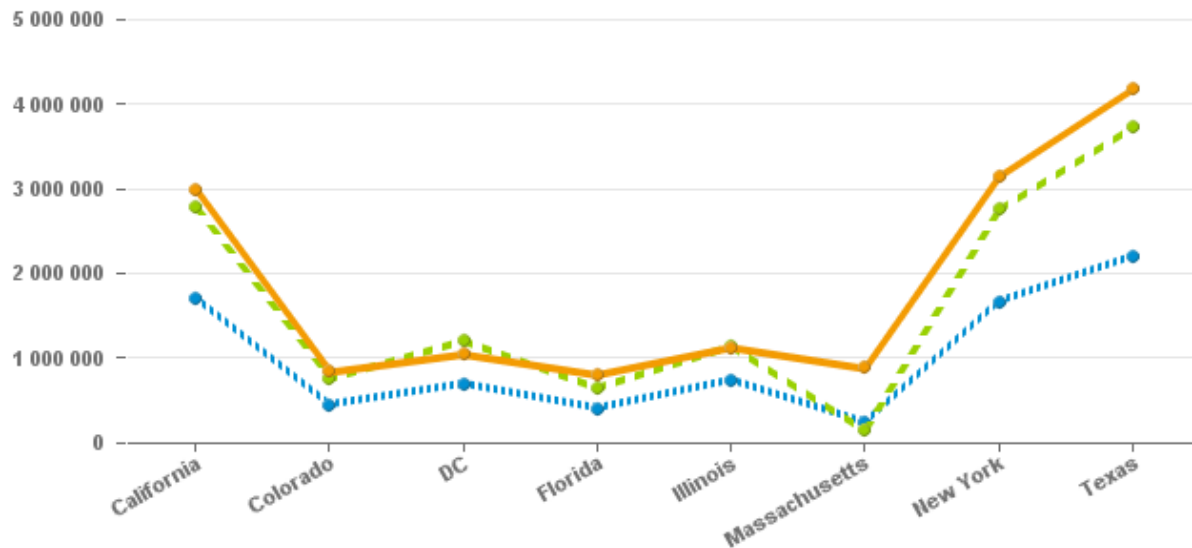
- Only available for Web Intelligence
- Copy of document does not copy variants
- Variants cannot be shared between documents or users



D7544 – Dashed lines in Web Intelligence charts

BI4.1 SP06 Web Intelligence charts

- Support for dashed lines and dotted lines



D7144 - Selection of "EMPTY" values when applying filter

Selection of EMPTY and NULL values

- Selection of EMPTY values was already possible before 4.1 SP06
- Selection of NULL values possible as of 4.1 SP06

The screenshot displays the SAP Business Objects Web Intelligence interface. On the left, the 'Input Controls' pane shows a 'City' control with a list of values including '[NULL_VALUE]', which is highlighted with an orange box. The main workspace shows a data table with columns 'State' and 'City'. The 'Define Input Control' dialog box is open, showing the 'Choose Control Type' section with 'Combo box' selected. The 'List of Values' section is set to 'All values from report'. The 'Allow selection of null values' checkbox is checked and highlighted with an orange box. The 'Operator' is set to 'Equal to'.

State	City	Sales
California	Los Angeles	4
California	San Francisco	3
Colorado	Colorado Spr	2
DC	Washington	2
Florida	Miami	1
Illinois	Chicago	3
Massachuset	Boston	1
New York	New York	7
Texas	Austin	2
Texas	Dallas	1
Texas	Houston	5

D7151 – Enhance the relative date function

Improved RelativeDate() function in BI4.1 SP06

In the RelativeDate() function, you have more date options in your calculations. A specific additional period parameter allows you to specify the period to add

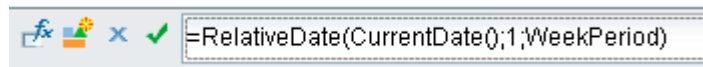
for Year, Semester, Quarter, Month, Week, Day and Hour.

Previously, you could only add or subtract a number of days from a date. To use the RelativeDate() function, you had to convert all periods (week, month, year etc.) in days.

The new signature function is: date RelativeDate(start_date;num;***period***)

where ***period*** is a value among: YearPeriod, SemesterPeriod, QuarterPeriod, MonthPeriod, WeekPeriod, DayPeriod, HourPeriod, MinutePeriod, SecondPeriod or MillisecondPeriod.

The default value for ***period*** is DayPeriod.



Other Web Intelligence improvements delivered

BI 4.1 SP06

Free-hand SQL

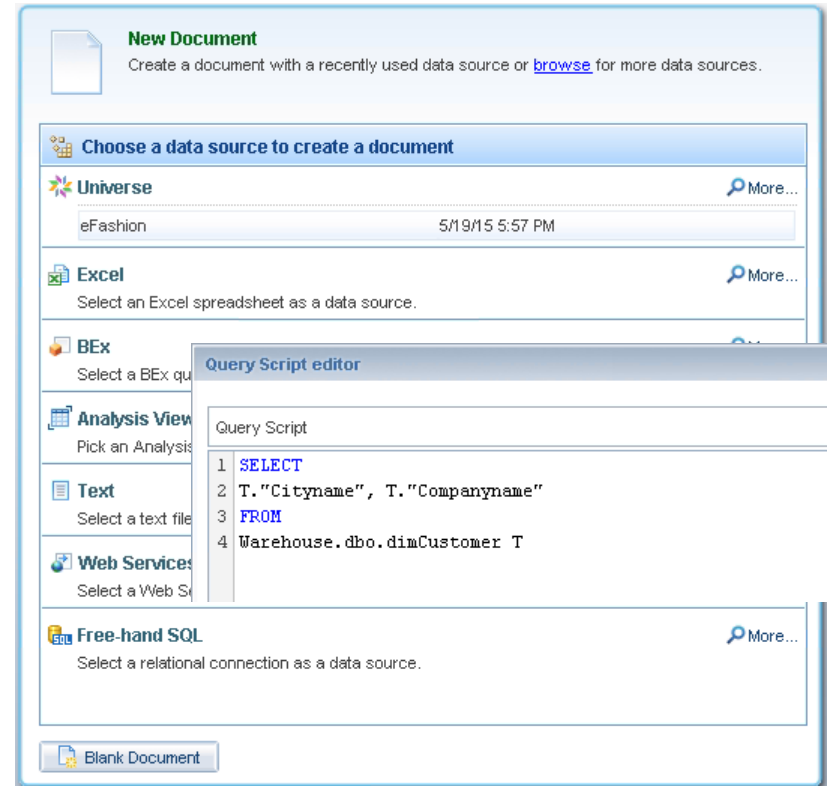
- Create a WebI data provider and type SQL directly
- Enables stored procedures execution
- Convert Deskl doc with FHSQL with RCT

Change source options

- Change source from local Excel file to Excel file on CMS
- For universes, XI 3.1 applies a name-based mapping rule whereas BI 4.x applies an object ID mapping rule. With 4.1 SP06, users can choose the mapping rule (name or ID)

Cancel query

- User gets control back after canceling a query, including on BW
- Both in Java and HTML clients



Improvement Requests scoped BI 4.2

- D7445
Provide a maximize button or larger window for the Web Intelligence Query Panel
- D7398
Allow parallel processing of multiple WebI queries within a single WebI report
- D7158
Support for Geo Maps within WebI
- D8007
Comment management with workflow
- D7703
WebI charts to follow Lumira UI
- D7844
Universe-level variables – Workaround: shared variables

Requests are scoped for release
BI 4.2

Planned availability for customer is end
of December 2015.



What's next ?

- Adopt the new improvements in your productive environment
- Share your experience with us
- Promote Customer Connection within your communities



Questions & Answers



Thank you!



Visit us:

www.sap.com/cc



Follow us:

[SAP Community
Network \(SCN\)](#)



Join us:

[Twitter.com/SAP](https://twitter.com/SAP)
[CustCon](#)

Questions or remarks? We are here for you.
Simply contact us via e-mail:

Daniel-Alexander Heller - Project Manager
Phone: +49 6227 744432
Email: daniel-alexander.heller@sap.com

Frank Prabel - Senior Director of Product Management